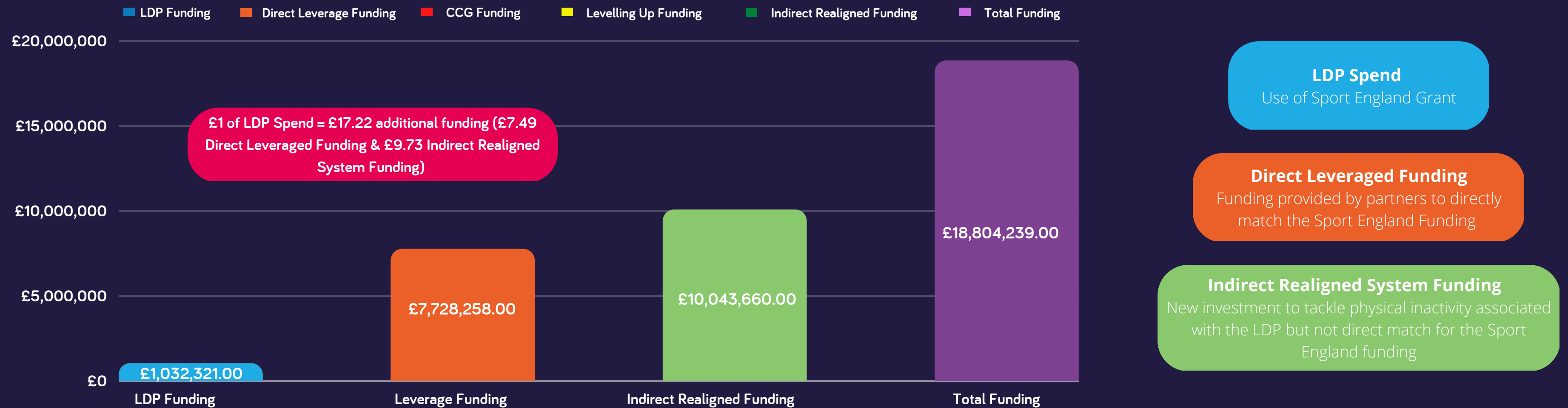


# Active Essex Local Delivery Pilot (Essex-Wide Delivery)



Quarterly Report September- December 2022

# Essex-Wide approved investment proposals April 2020-December 2022



## Leverage Funding

### Essex Coach Core Apprenticeship Programme - £145,195

-Various Partners/Employers contributions (£145,195)

### Achieve, Thrive, Flourish (ATF) - £448,844

-ATF (£89,750)

-New Income Generated (£100,094)

-National Lottery Community Fund (£225,000)

-Violence and Vulnerability Board (£34,000)

### Motivated Minds - £244,500

-National Lottery Community Fund (£225,000)

-Violence and Vulnerability Board (£19,500)

### Prevention and Enablement Model Continuation - £145,000

-ECC Adult Social Care (£145,000)

### Kick off at 3 - £10,000

-Violence and Vulnerability Unit (£10,000)

### Youth Services Detached Youth Work - £145,000

-Violence and Vulnerability Board (£120,000)

-Active Essex Children and Young People (£25,000)

### Essex Youth Crime & Sport - £359,381

-National Lottery Community Fund (£310,781)

-Active Essex Foundation (£48,600)

### Prevention and Enablement Model - £57,500

-ECC Adult Social Care (£57,500)

### ECC Holiday Hunger - £5,383,060

-Various Partners (£5,383,060)

### Essex Cycle Grant - £160,000

-Essex County Council (£160,000)

### Essex Pedal Power - Assistant Relationship Manager for Cycling & Essex Pedal Power Evaluation Researcher - £100,000

-London Marathon Charitable Trust (£100,000)

### Safer, Greener, Healthier - £80,000

-ECC Sustainable Travel Team (£80,000)

## Indirect Realigned System Funding

### Holiday Hunger - £7,138,560

-Department for Education (£4,020,060)

-Essex Association of Local Councils (£498,000)

-Contained Outbreak Management Fund (£505,000)

-Department for Environment, Food and Rural Affairs (£72,000)

-Essex County Council Working Parents Team (£262,000)

-Sport England Tackling Inequalities (£7,500)

-Lottery Emergency Fund (£88,000)

-Youth and Community Hub (£130,000)

-Essex Cultural Diversity Network (£77,000)

-Essex County Council (£600,000)

-Thurrock Council Department for Education (£500,000)

-Department for Work and Pensions (£300,000)

-Winter Grant (£79,000)

-Household Support Fund (£400,000)

### Find Your Active - £2,000,000

-Essex County Council (£2,000,000)

### Kick off @ 3 - £100,000

-Violence and Vulnerability Unit (£100,000)

### Motivated Minds - £5,100

-Basildon Mayors Fund (£5,100)

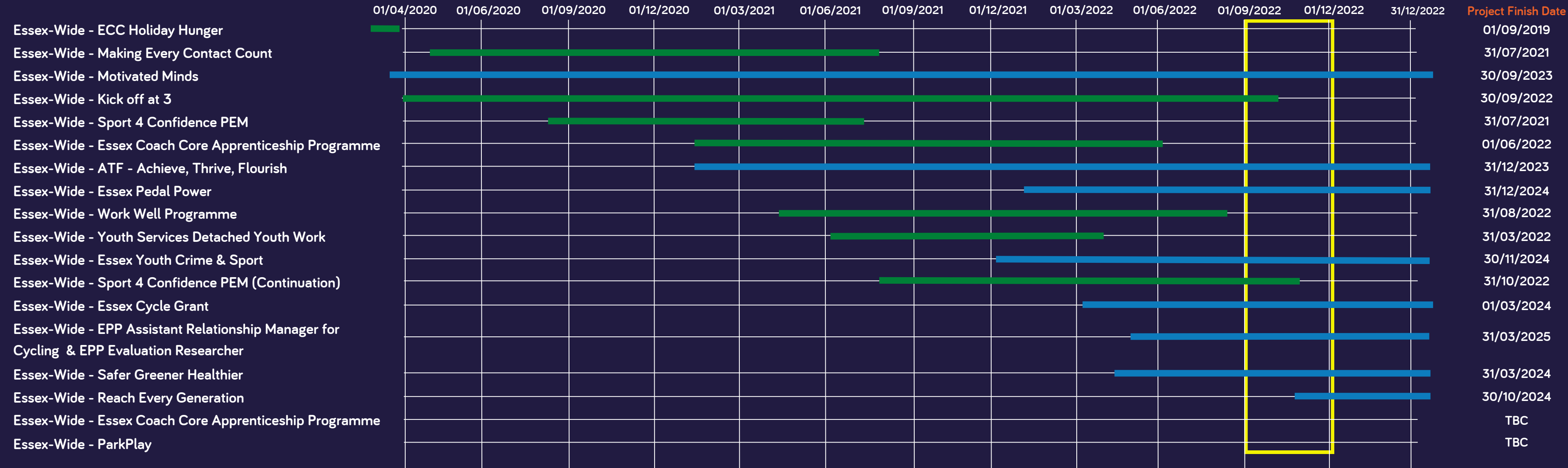
### Prevention and Enablement Model - £400,000

-Essex County Council (£400,000)



# Current Investment Schedule April 2020 - December 2022

Completed Approved to Commence In Progress Current Reporting Quarter Project Closed Early/Delayed



# Essex Sport & Youth Crime Prevention Project

Currently, over 64,000 children and young people are living in poverty throughout our county and anti-social behaviour is by far the highest rated crime across Essex, which is significantly above the country's average.

The project focuses on the high youth crime and violence areas of Basildon, Chelmsford, Southend, Thurrock, Harlow, Colchester, Clacton, and Canvey Island. The long-term plan is to ensure that the Essex criminal justice system is using sport regularly to prevent youth crime and violence.

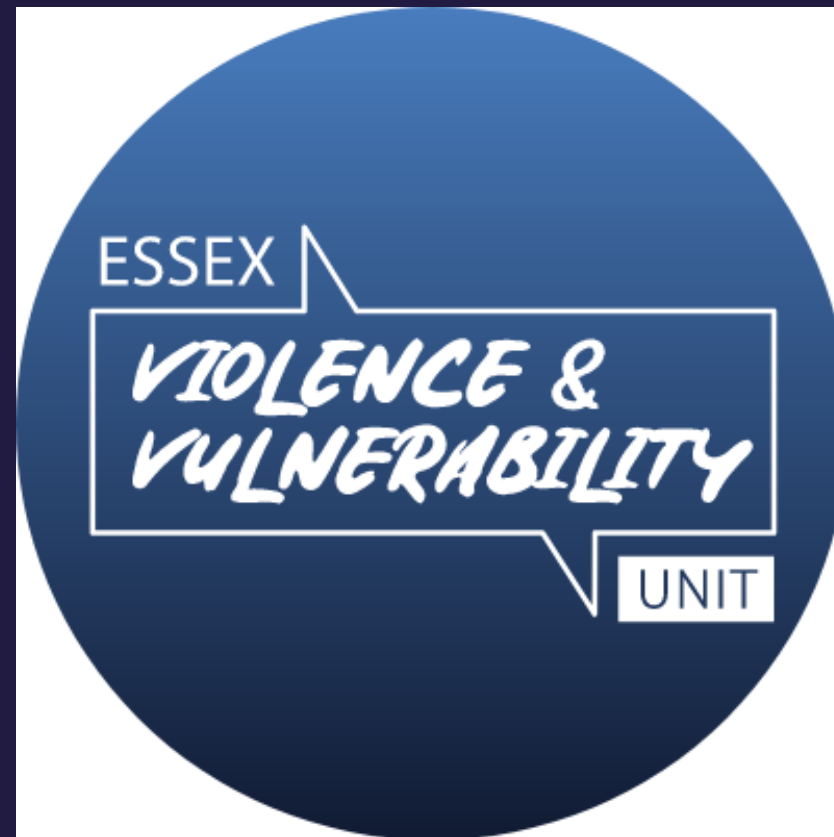
**25** Locally Trusted Organisations are engaged and being upskilled in the use of sport and physical activity to engage and support at risk young people.

Active Essex Foundation have agreed to match fund a sports connector who will support locally trusted organisations at a grassroots level.



**£450,000**

Secured to deliver sport and youth crime projects



**£144,436**

Funded from Active Essex Local Delivery Pilot

**40** people attended a successful Ninja Warrior engagement event held in December for stakeholders.

**£10,000** of additional funding has been secured to recruit sports navigators who will play a social prescribing role giving young people awaiting court dates a chance to take part in positive activities.

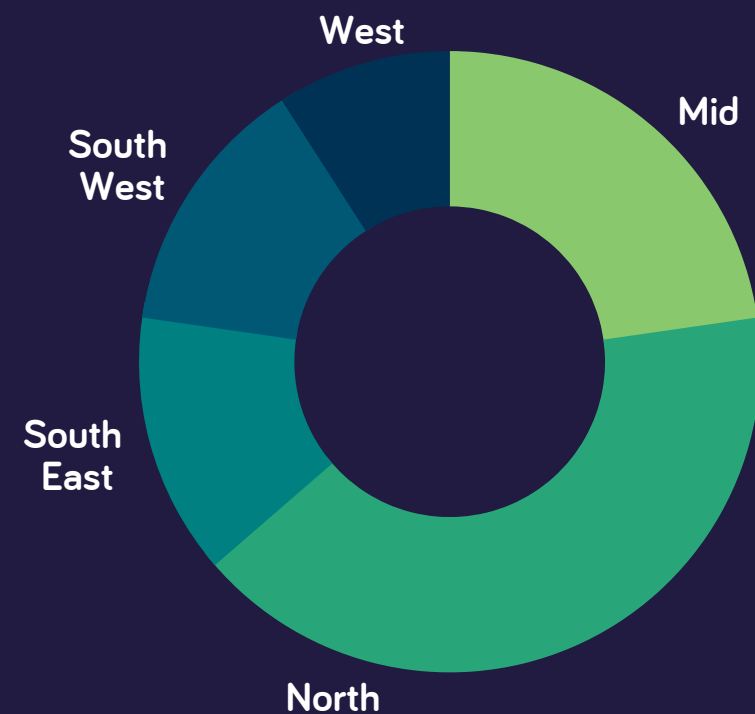
**£310,781**

Match funding secured from National Lottery Community Fund grant

# Essex Cycle Grants

The Essex Cycle Grant aims to support cycling activities and initiatives across Essex to engage more people in cycling. It is a joint venture between ECC sustainable Travel Team and the Essex Local Delivery Pilot and earlier this year an application to the LDP panel was successful in gaining additional funding to be able to support more cycling initiatives over the next 2 years.

The geographical spread of organisations being funded:



The Active Essex LDP have help to improve existing grant application

This has created a more user-friendly experience.

The simpler agreement, has saved officer time and process for all.

**£109,690**

has been awarded so far to support 22 projects

## Colchester Life in the UK

CLiUK Family Cycling Together project aims to support families from BAME communities who are mainly from underprivileged backgrounds, isolated and unable to engage/integrate well with the local community due to lack of finances or otherwise to get involved in cycling. Bikes are donated to families; lessons are offered and bi-monthly cycling and sports days are delivered.

On the 22nd Oct Colchester Life held a cycling and sports day at Old Heath Recreational Ground. In total they had 58 people take part in the day's activities.



The groups supported by this fund, are vital to the local community.

Through the financial support, they're encouraging more cycling.

Engaging almost 500 Essex residents.

Contributing to the ambitions within the Essex Cycling Strategy

## Care 4 Calais

Care4Calais cycle donation programme encourages local residents to donate unwanted cycles, which are then upcycled and given to refugees and asylum seekers, helping them travel across Basildon and Brentwood. The donation point for this programme is CyCool, a Wickford based cycle mechanic. CyCool then service the bikes, ensuring any maintenance is undertaken, before delivering the bikes to individuals who have requested a bike through Care 4 Calais. Since September, 11 bikes have been donated to the scheme and now have proud new owners, who are using the bikes to get to work, college, friends and for leisure purposes. Local residents have also been donating high number of children bikes. Care 4 Calais have teamed up with Forward Motion to also find worthy new homes for these bikes to.



Organisations that have recently received funding include:

- Care4Calais
- Together we Grow CIC
- GO4 Café New Town Bike Kitchen
- SVP Springfield
- Sociability

**61%**

of applications received so far have been from organisations that the ECC sustainable travel team haven't worked with before.



# Looking Forward... ParkPlay

ParkPlay launched in Essex in July 2021 to encourage low-income families with school aged children to be more active through two hours of quality fun and play every Saturday morning in a local park.

**£142,500**

invested by the LDP Panel into ParkPlay projects across Essex.

**£125,000**

has also been secured in match funding

ParkPlay is tackling some of the most pressing social issues of our time- lack of exercise, isolation and mental health.



"ParkPlay is a brilliant community event of two hours of free play in the park that serves as a perfect launchpad into every weekend. It's positive, safe, fun ... and everyone's invited"

ParkPlay locations in Essex

