

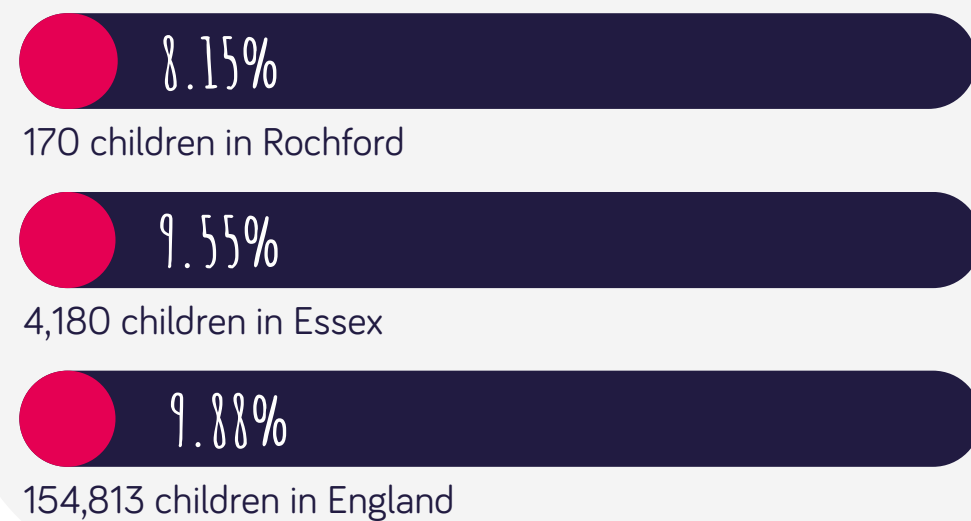


Rochford

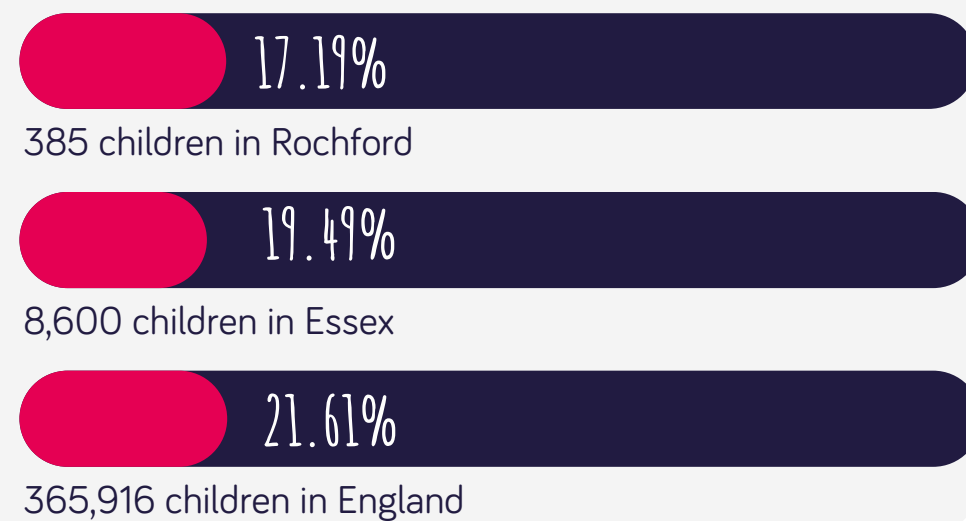
Obesity

*data set from National Child Measurement Programme, NHS Digital

OBESSE CHILDREN IN RECEPTION YEAR



OBESSE CHILDREN IN YEAR 6



14,927 under 16's in Rochford



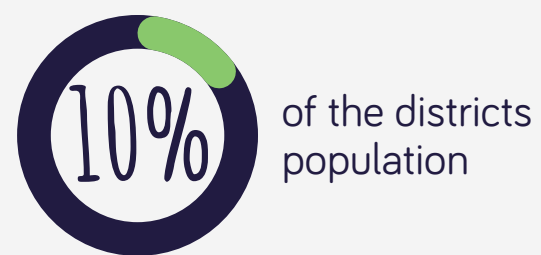
Universal Credit provides a single payment based upon the circumstances of the household to provide support for housing costs, children and childcare costs with additions for disabled people and carers.

5,268 residents on universal credit

*data set from Census 2021



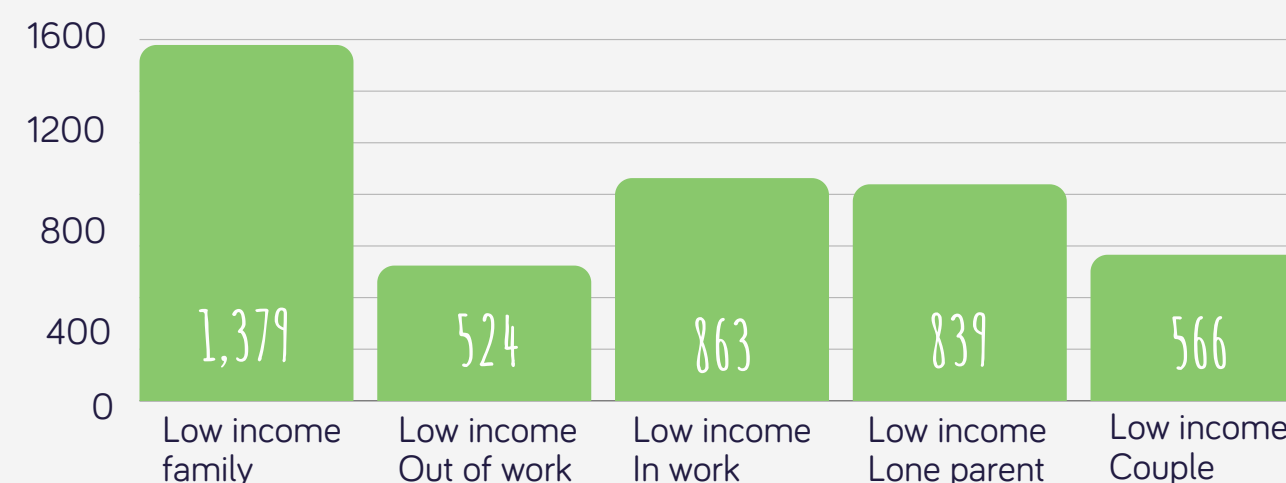
*data set from Department for Work and Pensions



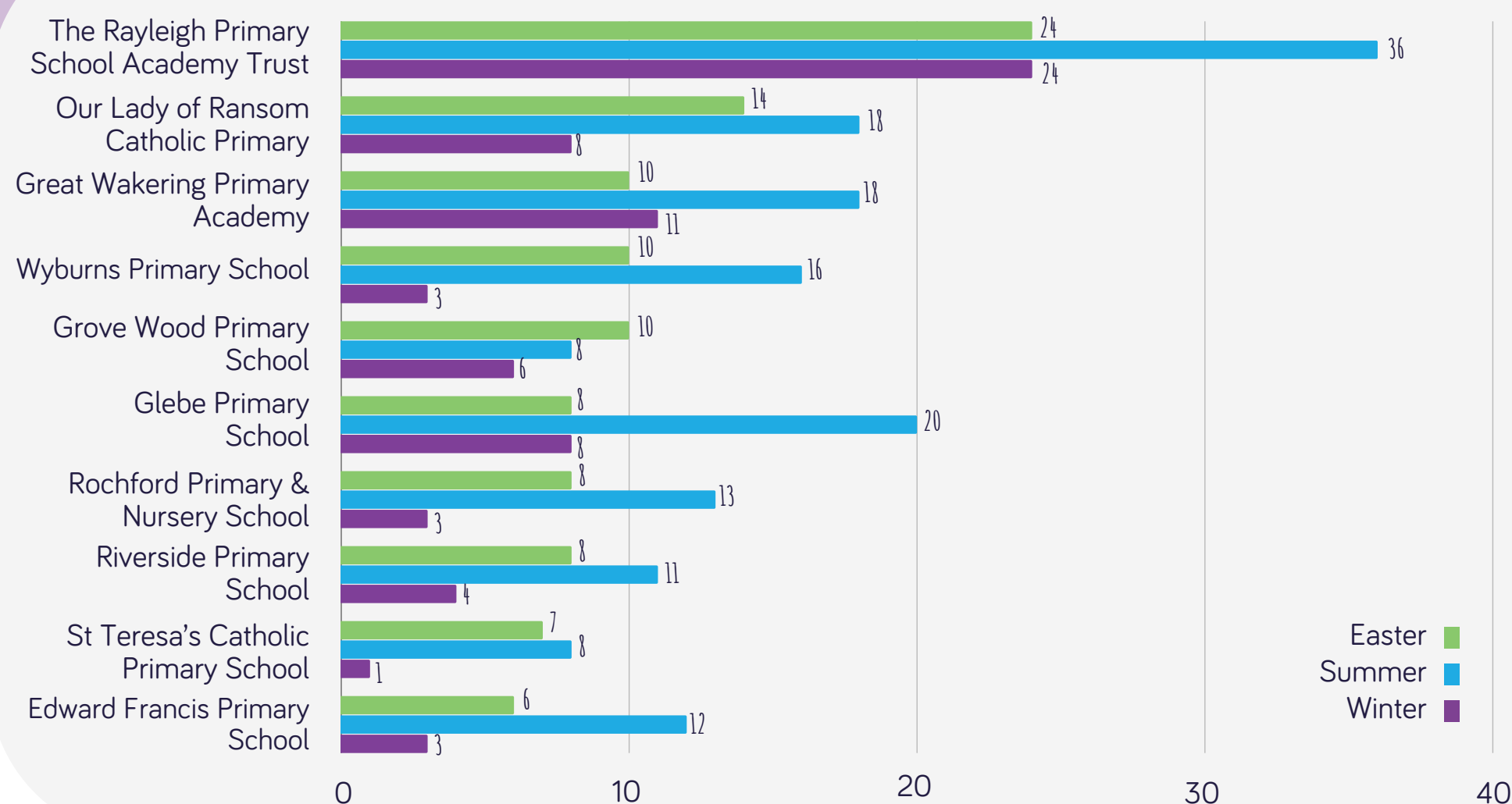
Our area

*data set from Department for Work and Pensions

CHILDREN LIVING IN ABSOLUTE LOW-INCOME FAMILIES

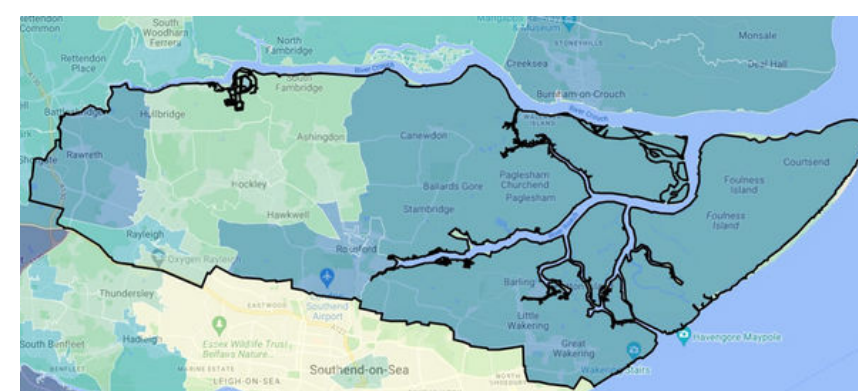


Schools in Rochford with high unique pupil engagement



*selected sample schools

Heat map of FSM



SCAN ME!



Rochford schools with highest % of 'income-related' free school meal pupils

1,907

'income-related' free school meal pupils in Rochford



The King Edmund School

375 free school meal pupils

63 FSM and SEN pupils



The Sweyne Park School, Rayleigh

211 free school meal pupils

42 FSM and SEN pupils



The Fitzwimarc School, Rayleigh

182 free school meal pupils

35 FSM and SEN pupils



Greensward Academy, Hockley

135 free school meal pupils

22 FSM and SEN pupils



Holt Farm Junior School

89 free school meal pupils

15 FSM and SEN pupils



Great Wakering Primary

85 free school meal pupils

22 FSM and SEN pupils



Rayleigh Primary School

82 free school meal pupils

19 FSM and SEN pupils



Rochford Primary & Nursery School

75 free school meal pupils

13 FSM and SEN pupils



Glebe Primary School, Rayleigh

74 free school meal pupils

13 FSM and SEN pupils



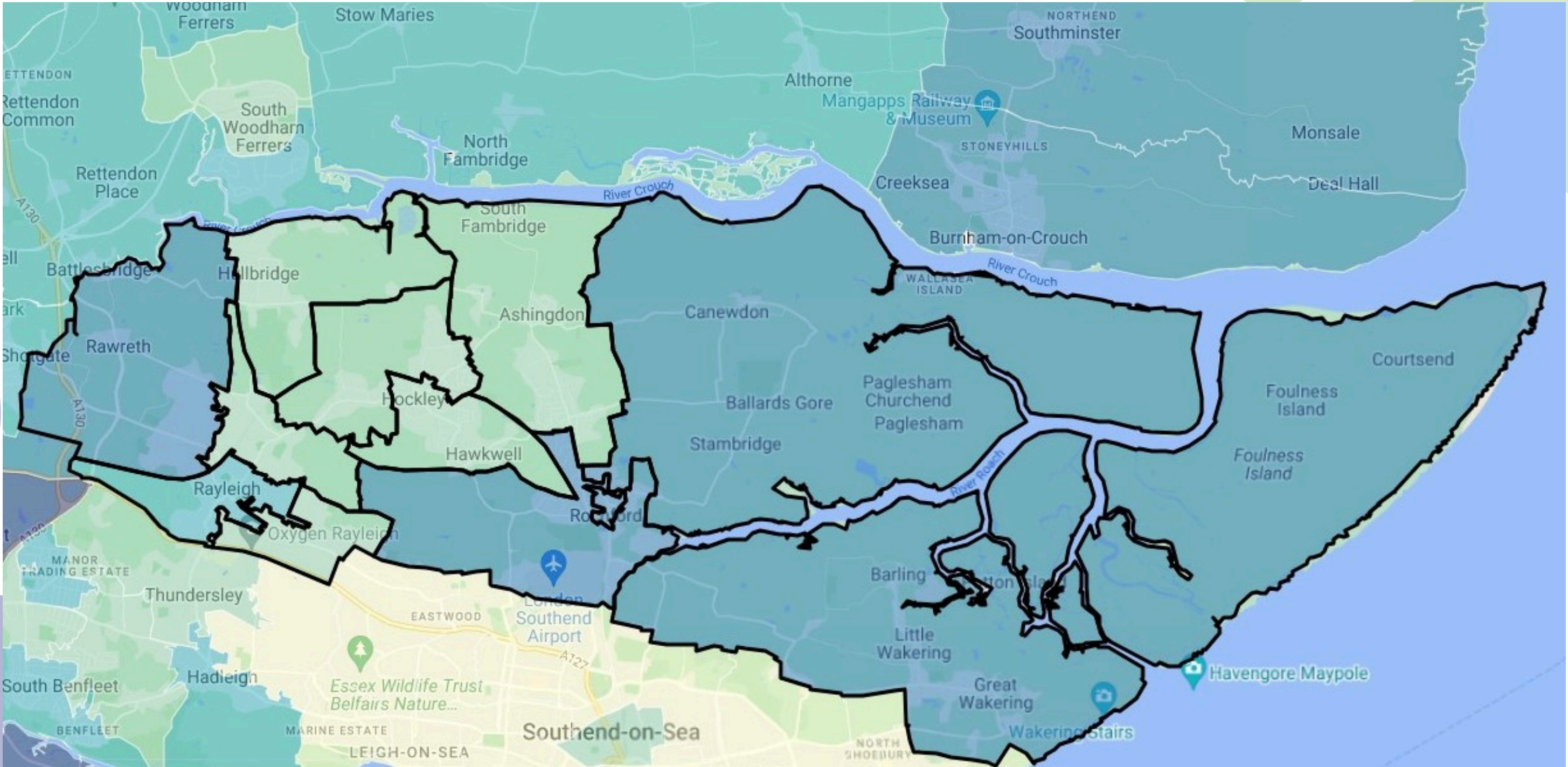
Grove Wood Primary School, Rayleigh

59 free school meal pupils

13 FSM and SEN pupils

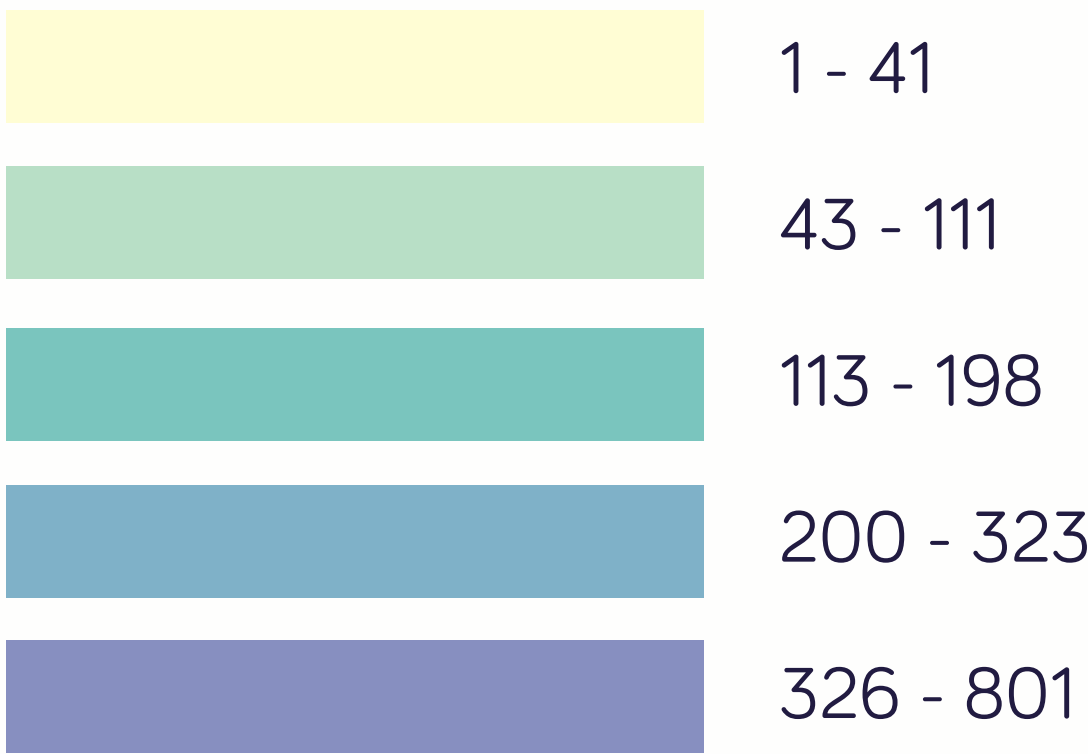


Rochford FSM Heat Map



KEY

FSM by Unique Residential Address



Rochford School Stats

Unique Pupil Engagement In Schools

School	Easter Release	Summer Release	Winter Release
The Rayleigh Primary School Academy Trust	24	36	24
Our Lady of Ransom Catholic Primary School	14	18	8
Great Wakering Primary Academy	10	18	11
Wyburns Primary School	10	16	3
Grove Wood Primary School	10	8	6
Glebe Primary School	8	20	8
Rochford Primary and Nursery School	8	13	3
Riverside Primary School	8	11	4
St Teresa's Catholic Primary School	7	8	1
Edward Francis Primary School	6	12	3
Holt Farm Junior School	6	9	7
Down Hall Primary School	5	9	1
Plumberow Primary Academy	5	8	2
The King Edmund School	3	4	2
Waterman Primary Academy	2	8	2
The Fitzwimarc School	2	5	4
Ashingdon Primary Academy	2	3	1
Canewdon Endowed Church of England Voluntary Controlled Primary School	1	7	4
Greensward Academy	1	2	4



Rochford FSM School Stats

'Income-Related' Free School Meal Schools

School	FSM Number	FSM + SEN	FSM%
The King Edmund School	375	63	25.0%
The Sweyne Park School	211	42	14.2%
The Fitzwimarc School	182	35	10.3%
Greensward Academy	135	22	8.7%
Holt Farm Junior School	89	15	29.2%
Great Wakering Primary Academy	85	22	20.4%
Rayleigh Primary School	82	19	17.8%
Rochford Primary & Nursery School	75	13	32.8%
Glebe Primary School	74	13	17.2%
Grove Wood Primary School	59	13	9.4%
Down Hall Primary School	51	6	19.3%
Riverside Primary School	49	5	13.7%
St Teresa's Catholic Primary School, Rochford	47	17	29.0%
Our Lady of Ransom Catholic Primary School	44	13	11.0%
Waterman Primary Academy	44	8	59.5%
Barling Magna Primary Academy	41	9	23.3%
Wyburns Primary School	41	8	20.9%
Plumberow Primary School	40	7	6.4%
Holt Farm Infant School	37	5	18.7%
Westerings Primary Academy	36	11	9.0%
Edward Francis Primary School	34	8	8.1%
Ashingdon Primary Academy	23	6	10.8%
Hockley Primary School	20	3	5.9%
Stambridge Primary Academy	20	1	19.6%
St Nicholas' Church of England Primary School, Rayleigh	7	2	4.9%
Canewdon Endowed Church of England (Voluntary Controlled) Primary School	6	2	5.5%
Poplar Adolescent Unit	0	0	0.0%

