



Tendring

Obesity

*data set from National Child Measurement Programme, NHS Digital

OBESSE CHILDREN IN RECEPTION YEAR



490 children in Tendring



4,180 children in Essex



154,813 children in England

OBESSE CHILDREN IN YEAR 6



865 children in Tendring



8,600 children in Essex



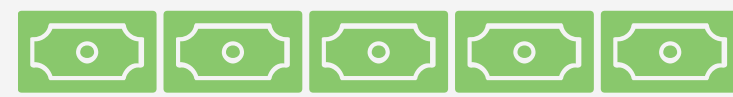
365,916 children in England

Our area

*data set from Census 2021



23,406 under 16's in Tendring



*data set from Department for Work and Pensions



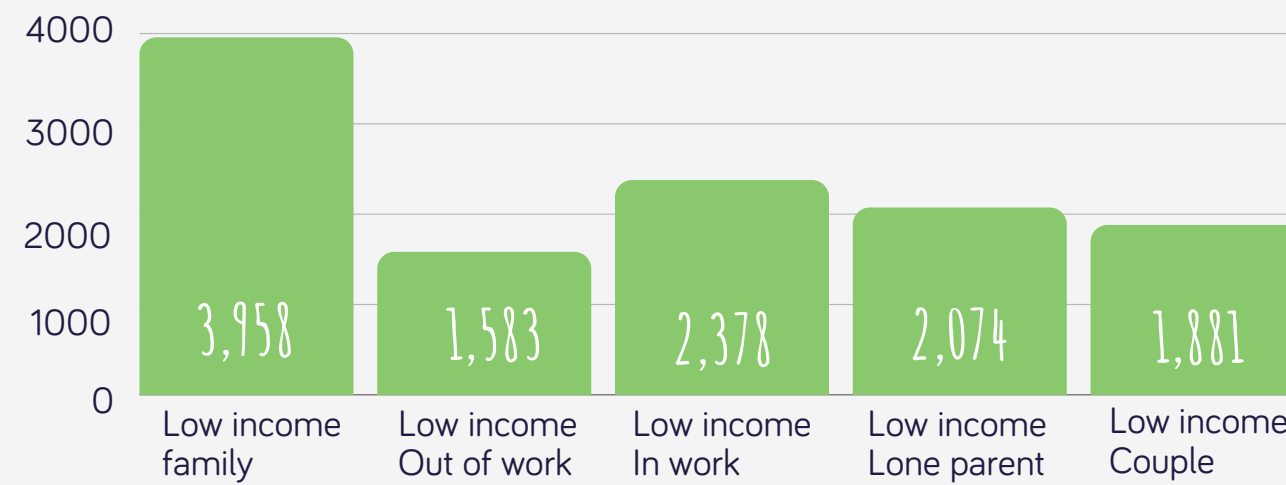
of the districts population



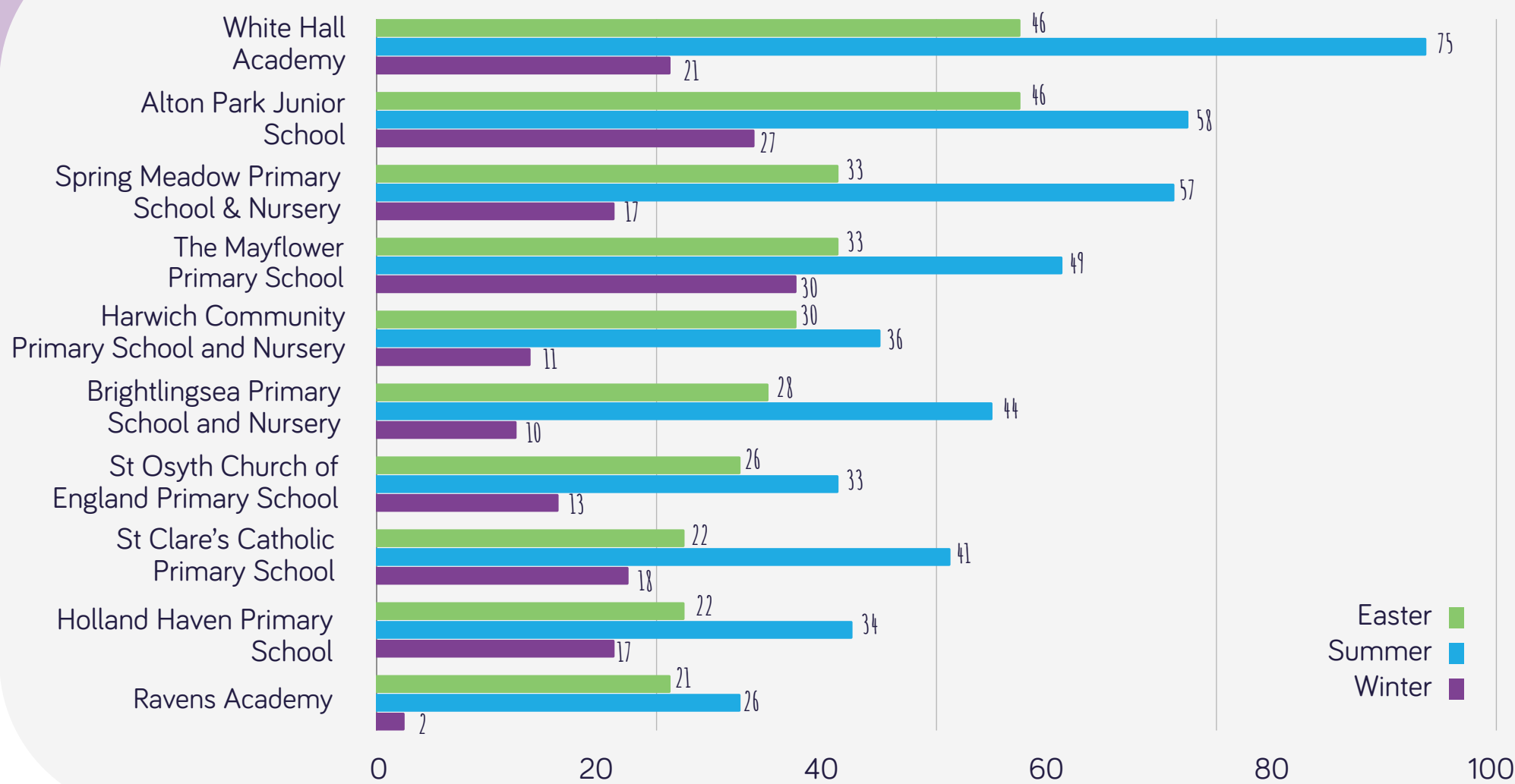
of the districts population

CHILDREN LIVING IN ABSOLUTE LOW-INCOME FAMILIES

*data set from Department for Work and Pensions

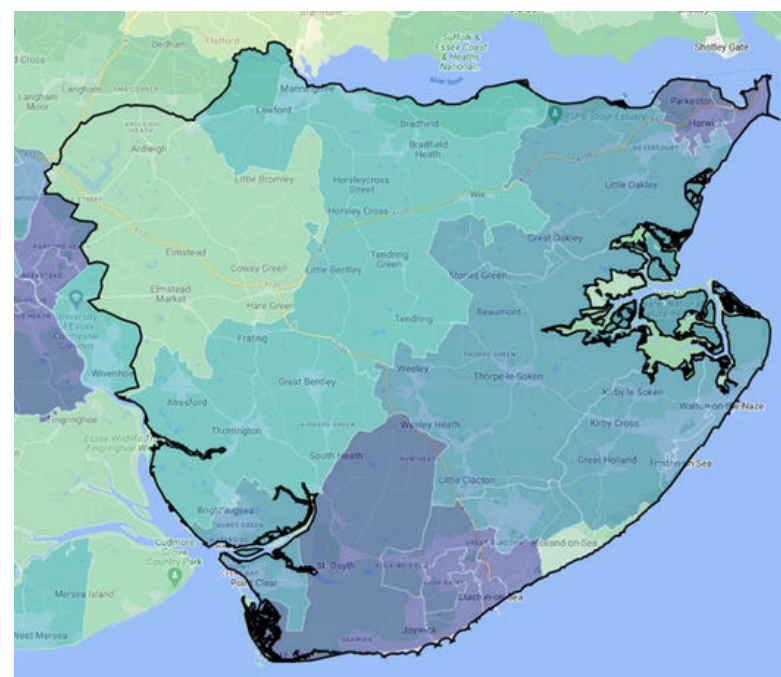


Schools in Tendring with high unique pupil engagement



*selected sample schools

Heat map of FSM



SCAN ME!



Tendring schools with highest % of 'income-related' free school meal pupils

5,880 'income-related' free school meal pupils in Tendring



Clacton Coastal Academy

685 free school meal pupils 202 FSM and SEN pupils



Tendring Technology College, Thorpe-Le-Soken

453 free school meal pupils 106 FSM and SEN pupils



Clacton County High School

408 free school meal pupils 93 FSM and SEN pupils



Harwich and Dovercourt High School

400 free school meal pupils 80 FSM and SEN pupils



White Hall Academy, Clacton

329 free school meal pupils 96 FSM and SEN pupils



Alton Park Junior School, Clacton

240 free school meal pupils 46 FSM and SEN pupils



Ravens Academy, Clacton

222 free school meal pupils 49 FSM and SEN pupils



Colne Community School & College, Brightlingsea

221 free school meal pupils 47 FSM and SEN pupils



Market Field School, Colchester

189 free school meal pupils 0 FSM and SEN pupils

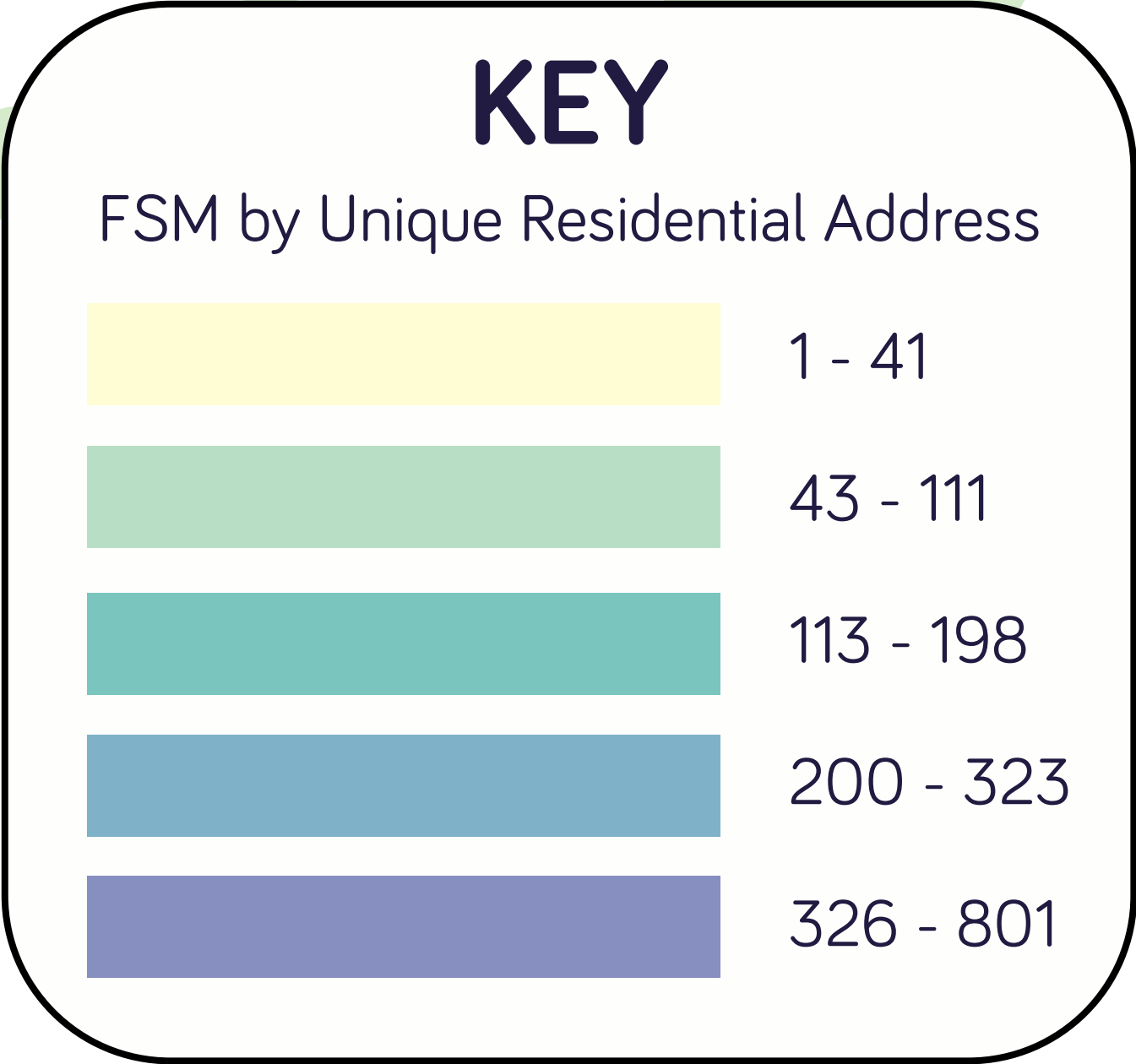
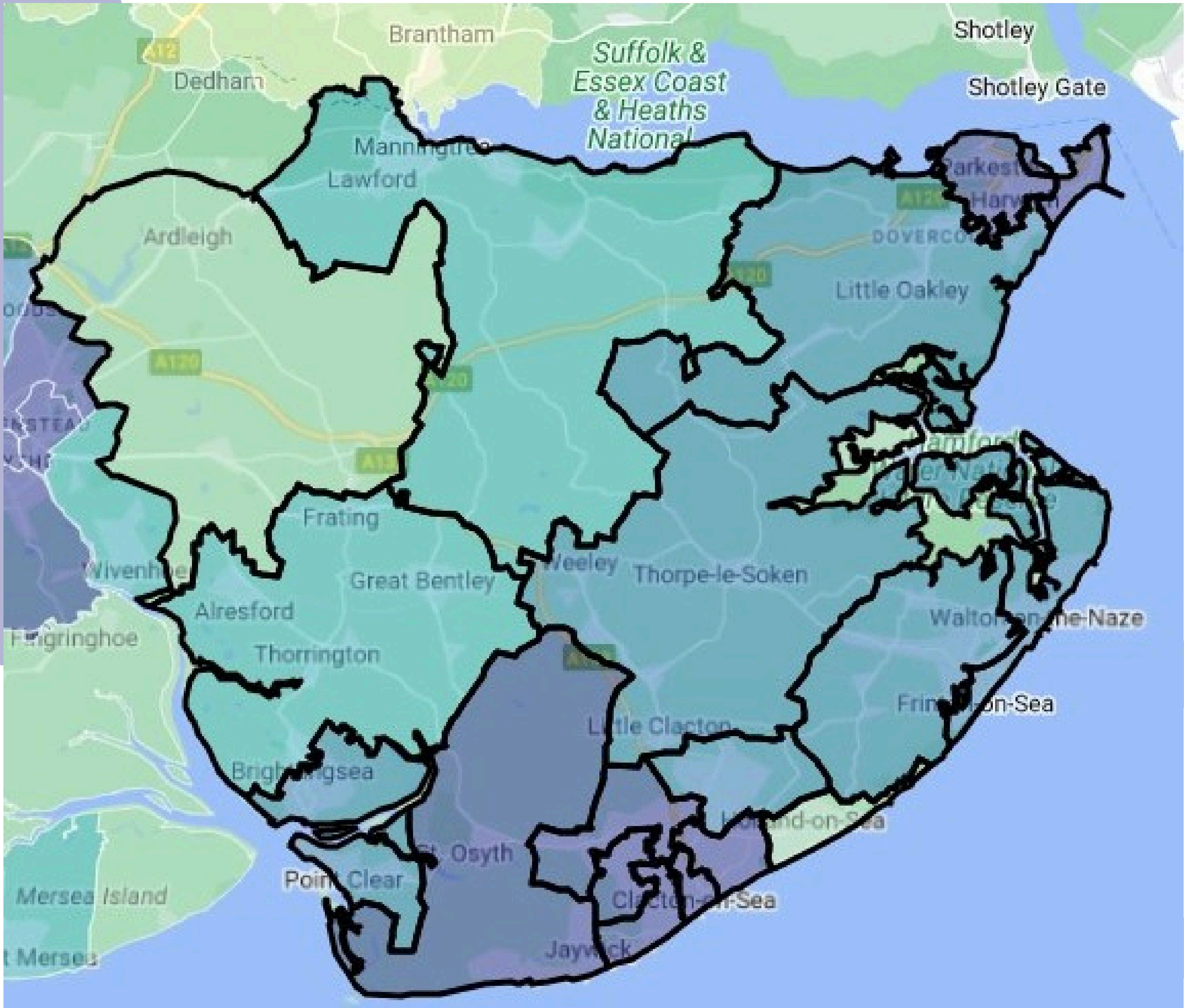


Spring Meadow Primary School, Harwich

179 free school meal pupils 62 FSM and SEN pupils



Tendring FSM Heat Map



Tendring School Stats

Unique Pupil Engagement In Schools

| School | Easter Release | Summer Release | Winter Release |
|---|----------------|----------------|----------------|
| White Hall Academy | 46 | 75 | 21 |
| Alton Park Junior School | 46 | 58 | 27 |
| Spring Meadow Primary School & School House Nursery | 33 | 57 | 17 |
| The Mayflower Primary School | 33 | 49 | 30 |
| Harwich Community Primary School and Nursery | 30 | 36 | 11 |
| Brightlingsea Primary School and Nursery | 28 | 44 | 10 |
| St Osyth Church of England Primary School | 26 | 33 | 13 |
| St Clare's Catholic Primary School | 22 | 41 | 18 |
| Holland Haven Primary School | 22 | 34 | 17 |
| Ravens Academy | 21 | 26 | 2 |
| Chase Lane Primary School and Nursery | 20 | 39 | 13 |
| Hamford Primary Academy | 17 | 35 | 21 |
| Harwich and Dovercourt High School | 16 | 12 | 10 |
| Engaines Primary School and Nursery | 12 | 23 | 9 |
| Holland Park Primary School | 11 | 30 | 4 |
| Two Village Church of England Primary School | 11 | 9 | 2 |
| Walton on the Naze Primary School | 10 | 16 | 11 |
| Cann Hall Primary School | 10 | 16 | 7 |
| Weeley St Andrew's CofE Primary School | 9 | 20 | 3 |
| Oakwood Infant and Nursery School | 9 | 18 | 13 |
| Sir Martin Frobisher Academy | 9 | 18 | 10 |
| Burrsville Infant Academy | 9 | 17 | 5 |

Unique Pupil Engagement In Schools

| School | Easter Release | Summer Release | Winter Release |
|---|----------------|----------------|----------------|
| All Saints' Church of England Voluntary Aided Primary School, Dovercourt | 9 | 11 | 3 |
| Great Clacton Church of England (Voluntary Aided) Junior School | 8 | 14 | 7 |
| Market Field School | 8 | 12 | 15 |
| Alresford Primary School | 6 | 5 | 2 |
| All Saints Church of England Voluntary Aided Primary School, Great Oakley | 4 | 8 | 2 |
| Highfields Primary School | 4 | 7 | 6 |
| Frinton-on-Sea Primary School | 4 | 5 | 4 |
| Clacton County High School | 3 | 8 | 8 |
| Tendring Primary School | 3 | 5 | 2 |
| Shorefields School | 3 | 4 | 2 |
| Lawford Church of England Voluntary Aided Primary School | 3 | 2 | 3 |
| Kirby Primary Academy | 2 | 9 | 4 |
| Rolph CofE Primary School | 1 | 7 | 6 |
| St Joseph's Catholic Primary School, Harwich | 1 | 3 | 1 |
| Bradfield Primary School | 1 | 1 | 2 |

Tendring FSM School Stats

‘Income-Related’ Free School Meal Schools

| School | FSM Number | FSM + SEN | FSM% |
|---|------------|-----------|-------|
| Clacton Coastal Academy | 685 | 202 | 49.1% |
| Tendring Technology College | 453 | 106 | 26.9% |
| Clacton County High School | 408 | 93 | 23.6% |
| Harwich and Dovercourt High School | 400 | 80 | 35.5% |
| White Hall Academy | 329 | 96 | 43.5% |
| Alton Park Junior School | 240 | 46 | 55.2% |
| Ravens Academy | 222 | 49 | 63.8% |
| Colne Community School and College | 221 | 47 | 17.9% |
| Market Field School | 189 | 0 | 42.6% |
| Spring Meadow Primary School | 179 | 62 | 44.8% |
| The Mayflower Primary School | 172 | 27 | 48.7% |
| Oakwood Infant & Nursery School | 161 | 17 | 47.6% |
| Brightlingsea Primary School and Nursery | 154 | 52 | 21.6% |
| St Clare's Catholic Primary School | 127 | 23 | 33.1% |
| St Osyth Church of England Primary School | 127 | 29 | 42.3% |
| Sir Martin Frobisher Academy | 125 | 49 | 73.5% |
| Harwich Community Primary School and Nursery | 121 | 26 | 50.0% |
| Hamford Primary Academy | 120 | 29 | 30.8% |
| Holland Park Primary School | 118 | 22 | 28.5% |
| Holland Haven Primary School | 104 | 20 | 25.6% |
| Chase Lane Primary School and Nursery | 103 | 26 | 22.7% |
| Great Clacton Church of England Junior School | 103 | 39 | 36.7% |
| Manningtree High School | 98 | 12 | 11.0% |
| Cann Hall Primary School | 86 | 20 | 20.5% |

‘Income-Related’ Free School Meal Schools

| School | FSM Number | FSM + SEN | FSM% |
|---|------------|-----------|-------|
| Walton-on-the-Naze Primary School | 85 | 25 | 43.4% |
| Shorefields School | 78 | 0 | 49.7% |
| Engaines Primary School and Nursery | 68 | 20 | 21.3% |
| St Andrew's CE Primary School, Weeley | 68 | 23 | 33.7% |
| Burrsville Infant Academy | 59 | 11 | 32.8% |
| All Saints' Church of England (Voluntary Aided) Primary School, Dovercourt | 58 | 12 | 31.2% |
| Kirby Primary Academy | 54 | 9 | 26.1% |
| Two Village Church of England Primary School | 50 | 13 | 30.1% |
| Alresford Primary School | 39 | 10 | 17.0% |
| Frinton-on-Sea Primary School | 33 | 5 | 15.6% |
| Rolph Church of England Primary School | 31 | 6 | 13.3% |
| Elmstead Primary School | 30 | 5 | 14.5% |
| All Saints Church of England (Voluntary Aided) Primary School, Great Oakley | 27 | 9 | 26.0% |
| Mistley Norman Church of England Primary School | 25 | 6 | 34.2% |
| Tendring Primary School | 25 | 7 | 13.3% |
| Highfields Primary School | 23 | 9 | 7.3% |
| Great Bentley Primary School | 20 | 6 | 9.3% |
| St Joseph's Catholic Primary School, Harwich | 15 | 5 | 13.3% |
| Bradfield Primary School | 12 | 3 | 10.8% |
| Lawford Church of England (Voluntary Aided) Primary School | 12 | 5 | 4.7% |
| Ardleigh St Mary's Church of England (Voluntary Controlled) Primary School | 10 | 2 | 9.4% |
| Wix and Wrabness Primary School | 7 | 3 | 6.1% |
| St George's Church of England Primary School, Great Bromley | 6 | 3 | 5.3% |