

Andy Thornton

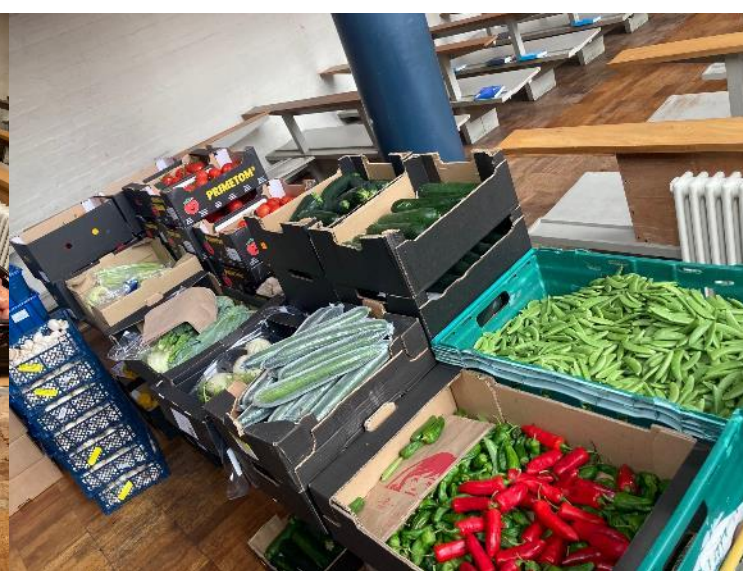


Andy Thornton

- What is it like supporting the community at present?
- What are some of the challenges residents are facing ?
- What are some of the challenges you face when supporting the community?
- What are the residents / community hopeful for?







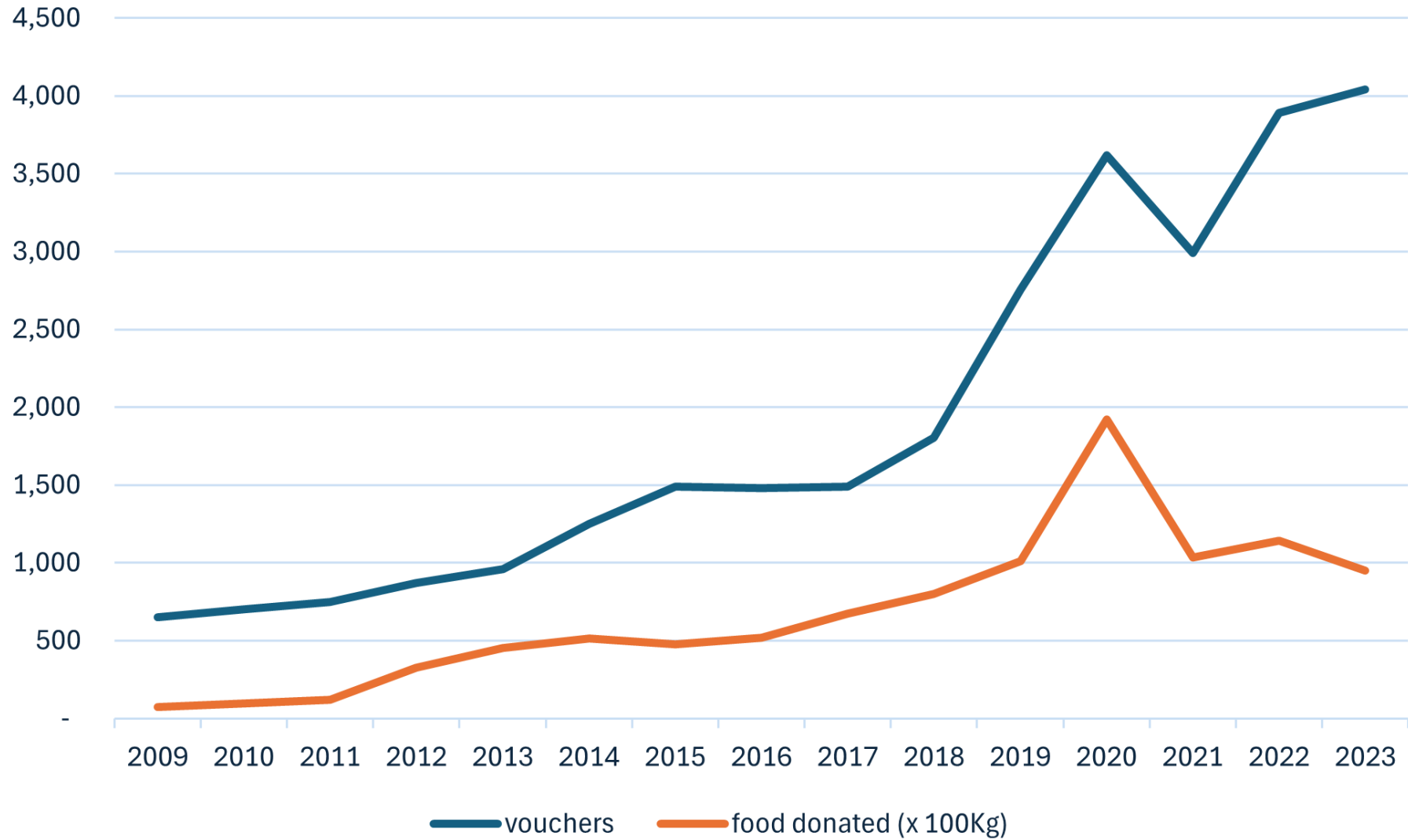


New venue...





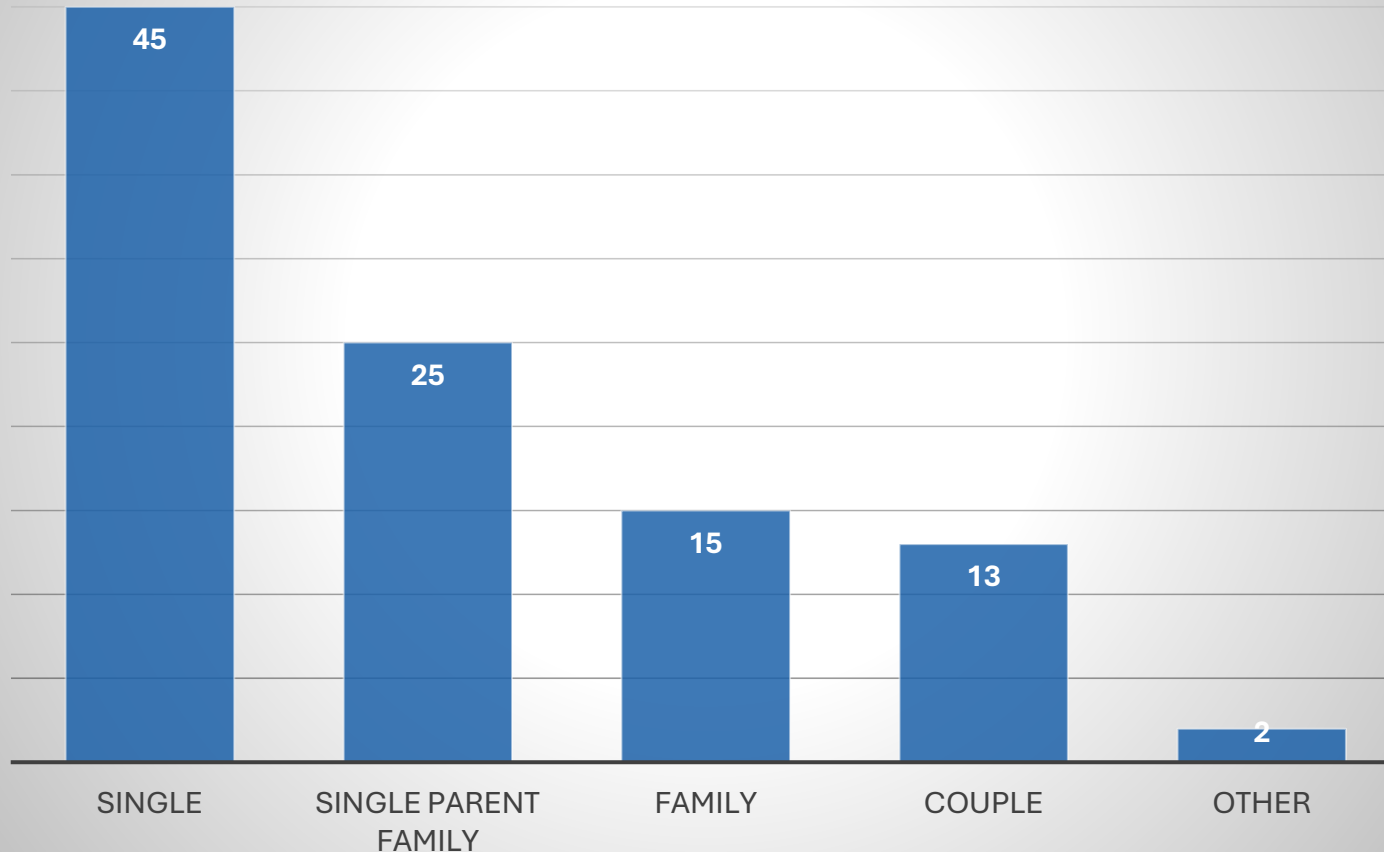
Vouchers fulfilled vs food donated





Food parcels by household type

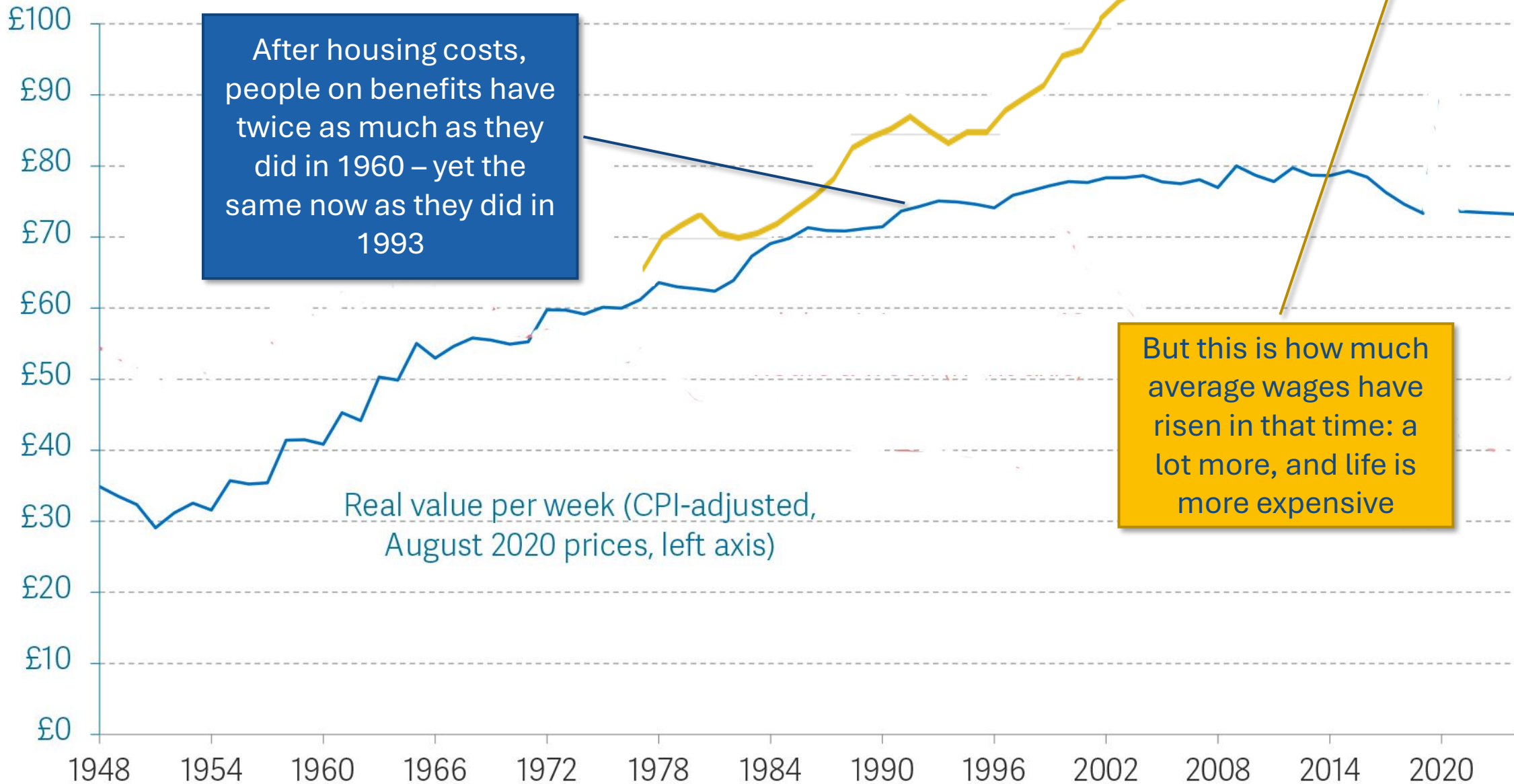
%



Who is most vulnerable?

- People on benefits
- Aged 25 – 55 (70%)
- Single income households (70%)
- Children are in 40% of households
- Recent rise in working families

What do we know – economic background

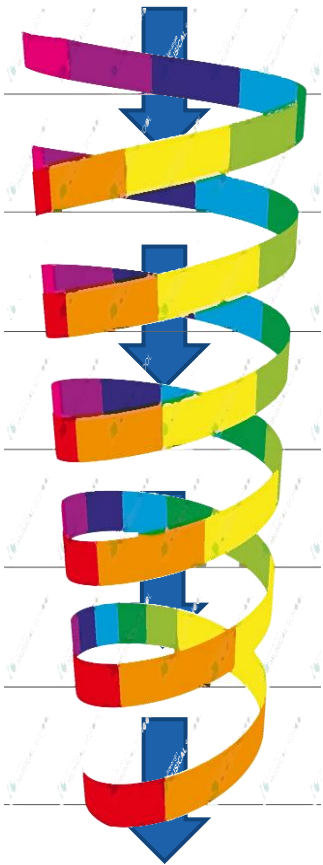


Predicaments

- No cash in a crisis = low resilience
- No money to socialise = increasing isolation
- No one to turn to = possibility of despair
- Unable to help your own children = social shame
- Unable to address health = likely depression

Poverty is about much more than money...

Growing
Financial Crisis



	Life control	Goal orientation	Achievement Orientation	Risk orientation	Learning orientation	Interpersonal confidence
Thriving	I can do this	I have clear purpose in life	I am happy to make the effort	I see plenty of solutions and opportunities	Nothing is a disaster, I'm always learning	I can influence others as much as they influence me
Surviving	I am enough in control to succeed	I keep my goals in sight	I can make enough effort to get by	I can see opportunities and threats	I think about what happens	I can get what I need when dealing with people
Struggling	Things keep happening to me	It's hard to keep focused on my goals	Making an effort is a struggle	Problems overwhelm me	I keep repeating mistakes	I often can't get others to pay attention to me
Drowning	I have no control over my life	I have lost sight of my goals	I can't seem to make any effort	I see nothing but the problems	I can't see a way out of my situation	I have no impact on others, I don't exist



Key local issues that came up

- Local transport - can't afford to have a car and the bus so expensive and routes getting cut
- Local youth group has folded - teenage son and friends nowhere to go
- Recently housed but got into debt paying for storage when evicted from previous house as landlord was selling
- Mental health services - such a long wait locally to access help



In the past year
Harlow Foodbank
has helped

10,000 individuals,
4,000 of them were
children.

To each according to his needs,
From each according to his ability

Do WHAT YOU SAY
Don't End Up
Getting Into
Cross Exchange
With Other Parties
IT TIME WASTING!

Grasshoppers (system)

The life of one individual out of the colony: And each soldier is the colony: to fight for his fellow like for the colony!

You'll see one that
sp to us, then all might and
stand up, it's
Those poor little units and
ins a hundred to one, and number
ear figure of life, if they
our thing of life, it's about keeping
that about 100, it's about keeping
those on in the 100.

Jumping through hoops. Working on universal credit too still cant cover the essentials.

A Roof above our heads
should be a fundamental
Emillonds to luxury for
hard working tenants
or vulnerable

A Government without
virtue can never take
care of its people

NEOLIBERALISM HAS FAILED
NOTHING HAS "TRICKLED DOWN"
APART FROM INEQUALITY

Our stories of **hardship** and **hope**

It's time to

**GUARANTEE
OUR ESSENTIALS**

Pension removed
I thought it'd be
better off but
live wit pensioner
age and have
put our pension
together and have
what's allowance
we're allowed to
work worse off
lives. Not our
fair. Not right.
Eck sky high.

middle men
not passing the
money this will put
people from
any issues that
waste of money.
Make decisions
renewed. (Minchen Rd)

Why can't
we go to work &
not need to work &
proper benefits &
with wages & time
should be a family
for society as a whole
Piggyback
sitting need
making problems

Feeling dictated
by the system, 2
Unable to move to improve
quality of life.

Keep Your Promises
Don't give
False promises

We need farm land
as much as housing
we need to grow our
own food we need to
look after our own
forests.

Harlow HAS
A LOT APPEAL.
When you're living on a
PENSION. MONEY ONLY GOES
SO FAR. WHILE I CAN STILL
WALK I WILL SHOP AROUND.

Local Housing Allowance
Needs to be reviewed
and changed.
Especially for Under 35's

INFRASTRUCTURE
ROADS TOO CONGESTED
LESS CARS/BETTER
PUBLIC TRANSPORT

No housing for young people
Worry about grandchildren.
Housing not built for people's
needs - Need more bungalows.

FUND LOCAL
COUNCILS PROPERLY

IT'S A SHAME THAT THE
COMMUNITY SPIRIT CAN'T
BE SHARED OR PROMOTED
BY THE GOVERNMENT

Many people are lonely
and isolated. We need
more community space
that doesn't cost money.
Not enough for young
people to do.

Frequent
2 Max.
Bursi
Bring back the 60/65
pension age

GUARANTEE
ONE YEAR

Stories of **Hardship**

Hardship is not often talked about
but we know it's there. We know it's
there and we know it's there.

From:



the trussell trust
Stop UK Hunger



**JOSEPH
ROWNTREE
FOUNDATION**

WE MAY NOT HAVE
IT ALL TOGETHER
HARLOW
BUT TOGETHER
WE HAVE IT ALL

Feeling dictated
by the system, &
worthless.
Unable to move to improve
quality of life.

Many people are lonely
and isolated. We need
more community spaces
that doesn't cost money.
Not enough for young
people to do.

IT'S A SHAME THAT THE
COMMUNITY SPIRIT CAN'T
BE SHARED OR PROMOTED
BY THE GOVERNMENT