

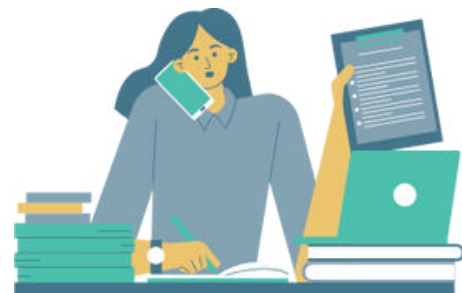


E-Portal-Essex

Support for BRAINTREE organisations

An online resource to help support you

The E-Portal will be a continuous evolving platform with the aim of becoming the one stop shop for organisations of all sizes to find information on a range of topics relevant to the voluntary and community sector.



Governance



Trustees



**Decision-
making**



Safeguarding



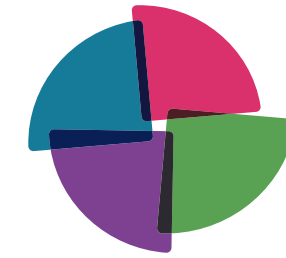
**Volunteers
Management**



**Volunteers
and the law**



Latest news

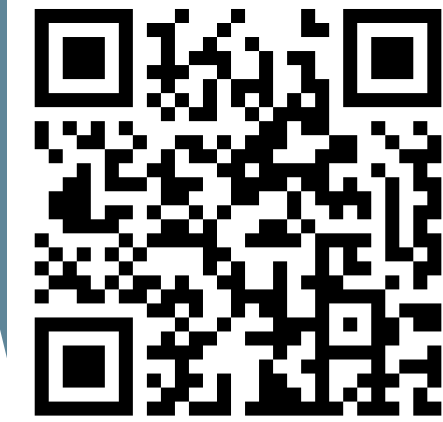


**Your Essex
Community**

Supporting the Voluntary
and Community Sector

Visit the [E-portal-Essex](#)

SCAN ME!



To input further suggestions on
the support you would like to see,
complete the short form [here](#)

Further support for Braintree

Your Essex Community aims to support a strong Voluntary and Community Sector.



Place-based support

Place-based support is there to understand your needs and identify the support you require. This might include peer support, workshops, networks for sharing and learning, webinars, training and mentoring.

Organisation	Activity	Time/Date/Venue
HR PRIME	Recruitment and Selection	18.03 9.30-12.30pm Location: Marks Farm Community Centre
HR PRIME	General Management and Law	05.02 9.30-12.30pm Location: The Coffee Lounge, Halstead URC
HR PRIME	Absence Management	03.03 9.30-12.30pm Location: Witham RBL
HR PRIME	Trustee Responsibilities	29.01 6-8pm Location: Online



EMAIL TEAM@HRPRIME.CO.UK TO BOOK YOUR SPACE



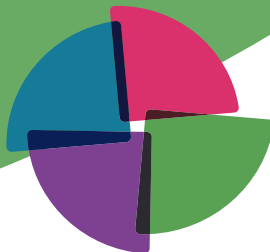
Community participation

If you are an organisation looking to inspire and increase community involvement, join our community of practice.

At these type of events (both online and face-to-face, you will meet like-minded people, share your knowledge and learn from others.

To find out more, complete the [short form](#)

SCAN ME!



Your Essex Community

Supporting the Voluntary and Community Sector

Further

BRAINTREE contacts



Explore training, grants, conferences and networking opportunities near you, and more widely to train and empower you and your organisation.

ECVYS



<https://ecvys.org.uk/>



Frontline

Frontline is a community project. It helps frontline workers and the public to quickly find details on local health and wellbeing services and to contact services through call back and referral options.



<https://essexfrontline.org.uk/>

Active
Braintree Foundation

Active Braintree Foundation was established in 2018. It was primarily set up to promote sport and physical activity for the benefit of health and well-being and to engage and support communities across Braintree District



[Link to further information](#)

Braintree District Council

BDC supports through strategic partnerships, funding and local initiatives.



[Read more](#)



Ambitious Essex

The Ambitious Essex Growth Hub provides businesses in Essex with a single point of access to a wide range of local, regional and national business support.



[Read More](#)



AMBITIOUS
ESSEX

Rural Community Council of Essex

RCCE provides a range of professional services for rural communities, helping them find practical solutions to the issues that matter



[Read more](#)

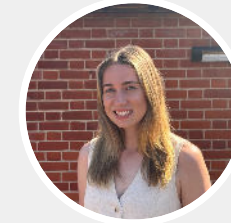


RCCE
RURAL COMMUNITY COUNCIL OF ESSEX

Get in touch with your
Active Essex place team:



Courtenay



Chloe



Jess



midhub@activeessex.org

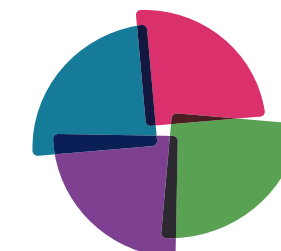


Essex Community Foundation

ECF provide grants to charities and voluntary organisations in Essex by working with individuals, families, businesses, charitable trusts and public agencies, helping them to find and fund local groups that are tackling the issues they care about most.



[Link to further information](#)



**Your Essex
Community**

Supporting the Voluntary
and Community Sector